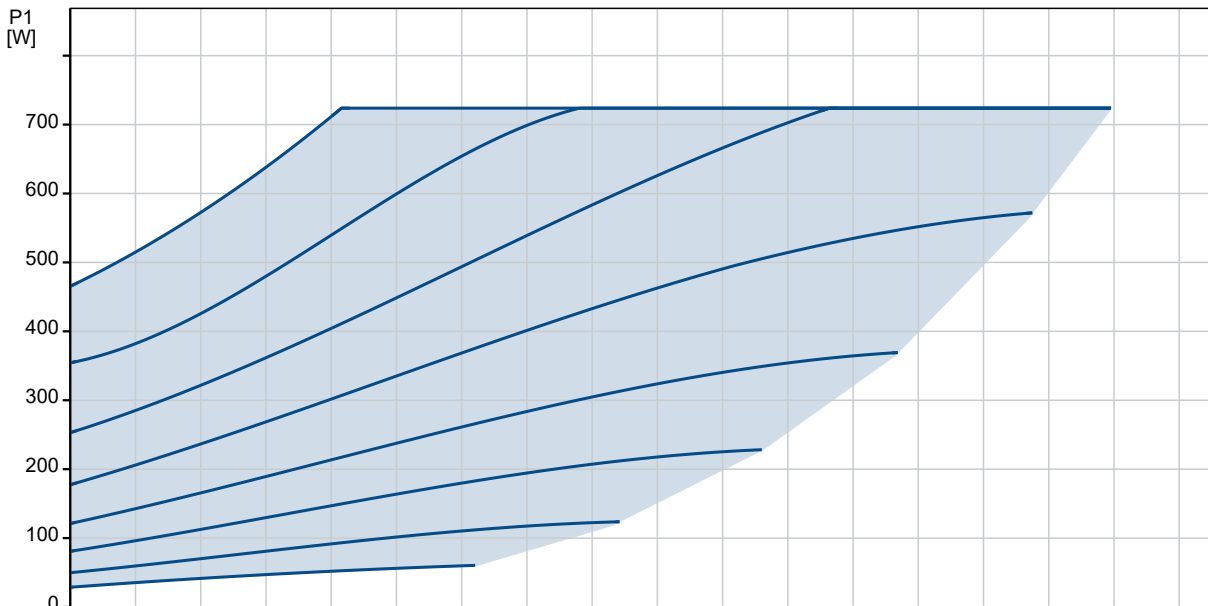
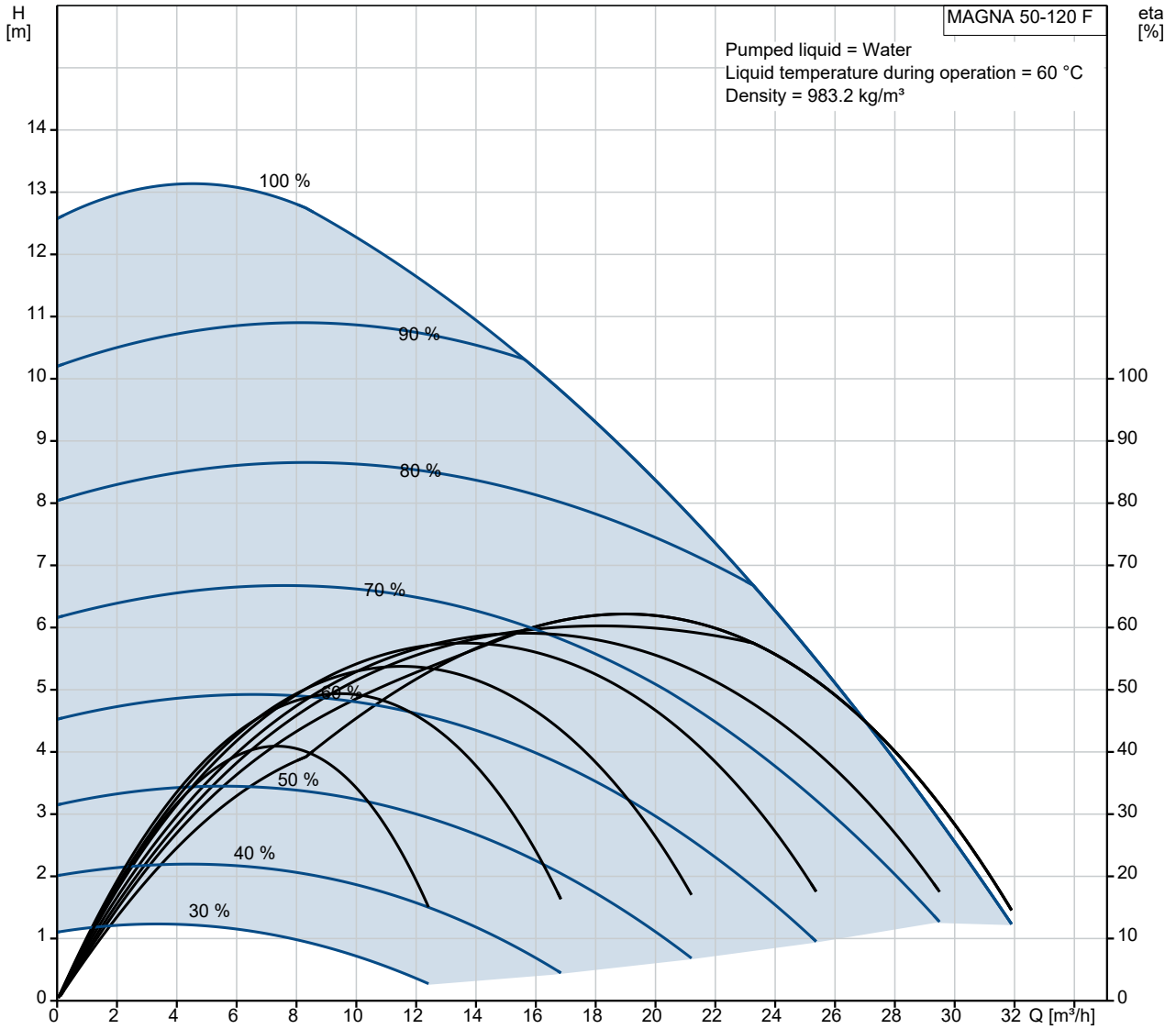
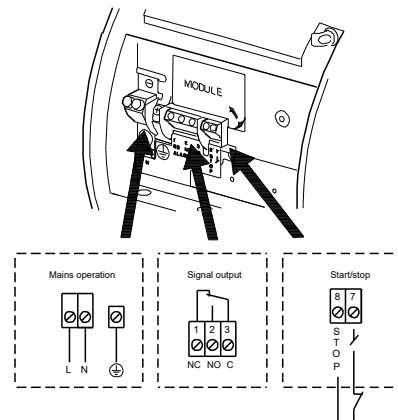
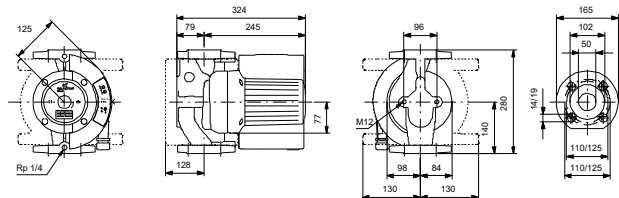
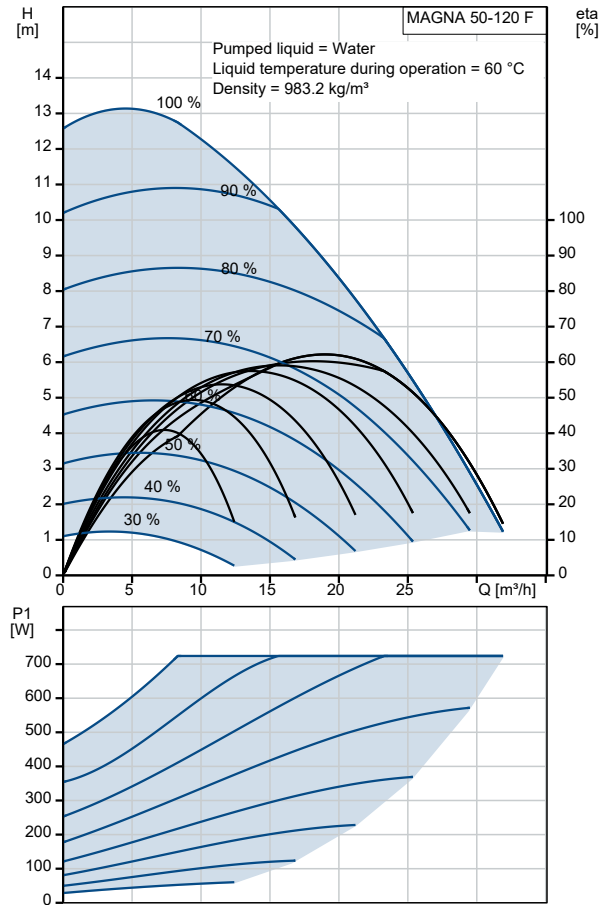


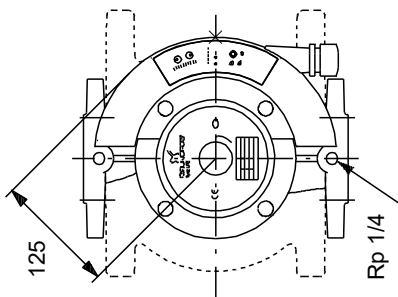
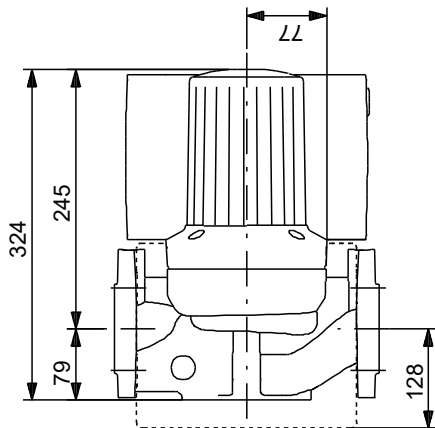
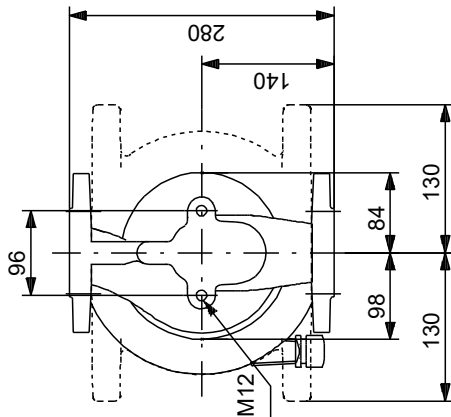
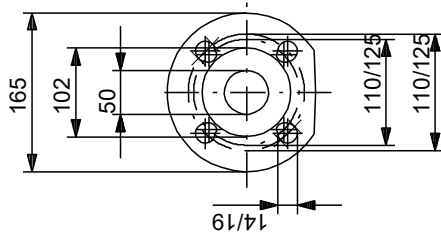
## 96504872 MAGNA 50-120 F 50 Hz



Description	Value
<b>General information:</b>	
Product name:	MAGNA 50-120 F
Product No:	96504872
EAN number:	5700396300726
Price:	
<b>Technical:</b>	
Head max:	120 dm
TF class:	110
Approvals:	CE, TSE, PCT
Model:	F
<b>Materials:</b>	
Pump housing:	Cast iron
Pump housing:	EN-JL1040
Pump housing:	ASTM 35 B - 40 B
Impeller:	Stainless steel
Impeller:	DIN W.-Nr. 1.4301
Impeller:	AISI 304
<b>Installation:</b>	
Range of ambient temperature:	0 .. 40 °C
Maximum operating pressure:	10 bar
Flange standard:	DIN
Pipe connection:	DN 50
Pressure rating:	PN 6 / PN 10
Port-to-port length:	280 mm
<b>Liquid:</b>	
Pumped liquid:	Water
Liquid temperature range:	2 .. 95 °C
Selected liquid temperature:	60 °C
Density:	983.2 kg/m <sup>3</sup>
<b>Electrical data:</b>	
Power input - P1:	35 .. 800 W
Mains frequency:	50 Hz
Rated voltage:	1 x 230-240 V
Maximum current consumption:	0.28 .. 3.5 A
Enclosure class (IEC 34-5):	X4D
Insulation class (IEC 85):	H
<b>Controls:</b>	
Pos term box:	15
<b>Others:</b>	
Net weight:	22 kg
Gross weight:	24 kg
Shipping volume:	0.043 m <sup>3</sup>
Danish VVS No.:	380684720
Norwegian NRF no.:	9043065



## 96504872 MAGNA 50-120 F 50 Hz



Note! All units are in [mm] unless others are stated.  
Disclaimer: This simplified dimensional drawing does not show all details.